

Middle Rio Grande MS4 Permit Compliance Activities City of Albuquerque

2018 EPA Region 6 MS4 Conference, Albuquerque, NM

L. Brad Sumrall, P.E.

Director – Water Resources SW Region
Weston Solutions



Shellie Eaton, P.E.

Project Manager – City of Albuquerque
Department of Municipal Development



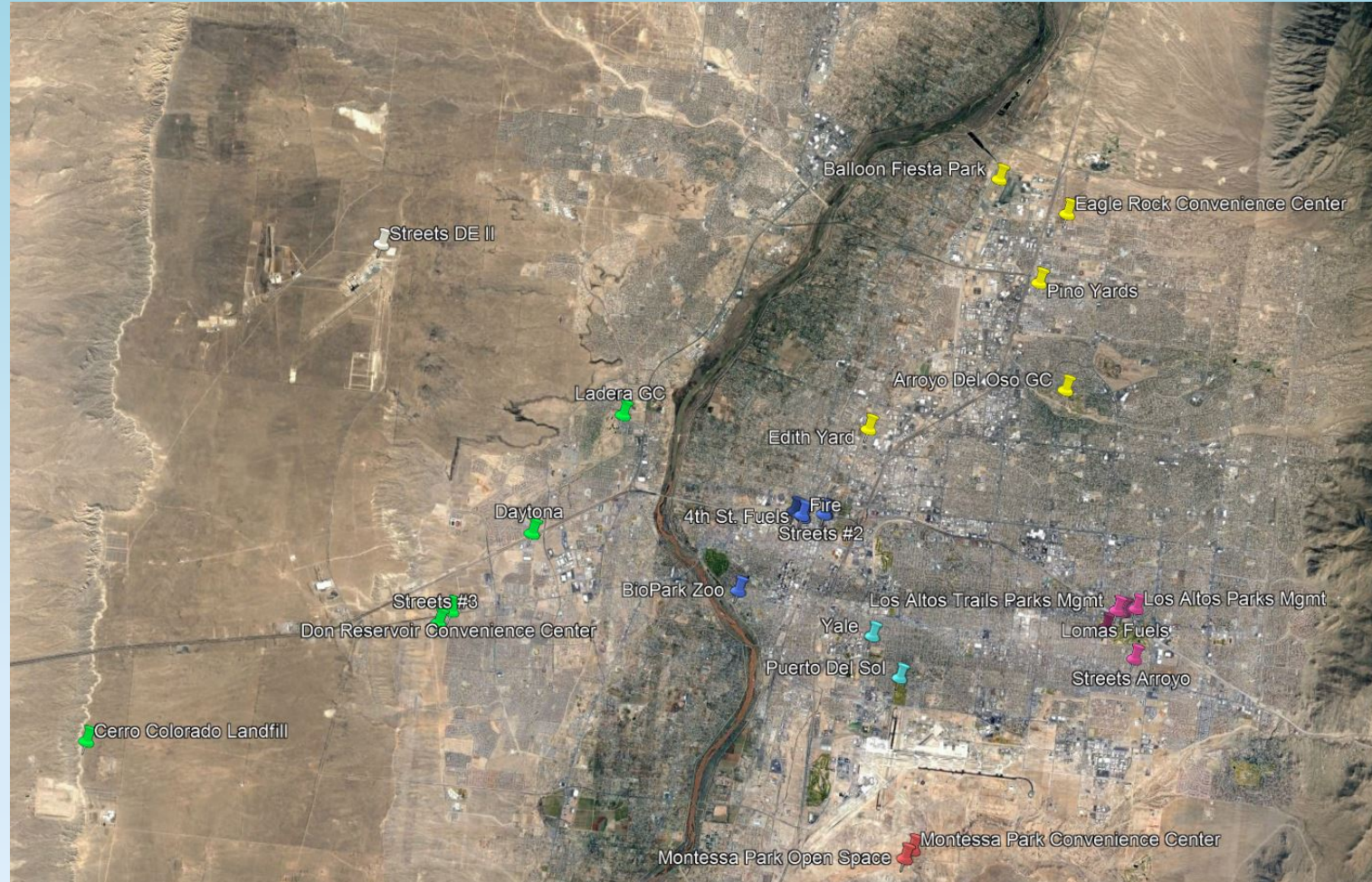
City of Albuquerque MS4 Permit

- Middle Rio Grande Watershed Based Permit (Dec. 2014)
- 18 co-permittees
- Specific elements require investment in:
 - Municipal Good Housekeeping – Storm Water Pollution Prevention Plan (SWPPP), Training, Inspections
 - SWPPP\Spill Prevention Control and Countermeasures (SPCC) - Plans, Inspections, Training
 - Visual Inspection Program
 - Industrial Inspections
 - BMP Design and Implementation

Municipal Good Housekeeping Program

- City initiated Inspection Program in 2014
- Quarterly inspection of 34 facilities operated by the City including:
 - City Vehicle Maintenance Facilities/Transit Facilities
 - City Fueling Facilities
 - Solid Waste Landfills/Transfer Stations
 - Golf Courses (4)
 - Landscape/Open Space Operations Facilities
 - Albuquerque Balloon Fiesta Park
 - Albuquerque BioPark (Zoo, Botanical Garden, Aquarium)
 - Pino Yard – 6 separate operations/1 location

City of Albuquerque Facilities – Good Housekeeping



Municipal Good Housekeeping Program

Activities:

1. Perform initial facility inspection
2. Create/revise SWPPP
3. Perform training of site storm water team
4. Perform quarterly inspection of each facility
5. Re-inspect within 30 days if deficiencies noted

Municipal Good Housekeeping- Inspection Program Before.....



Municipal Good Housekeeping- Inspection Program After.....



Waste fluids
consolidate under
cover

All contained in
covered containers

Municipal Good Housekeeping- Inspection Program Before...



Municipal Good Housekeeping- Inspection Program After.....



Municipal Good Housekeeping- Inspection Program After.....



Municipal Good Housekeeping- Inspection Program Before...



Municipal Good Housekeeping- Inspection Program After.....



Improvements resulted from investing in:

- Educating site operations staff concerning MS4 permit compliance requirements
- Establishing standard operating procedures for waste handling and storage
- Successive inspections to gauge operational improvements

SWPPP\SPCC Plans Development and Implementation

SWPPPs

- Some City facilities had begun development and implementation of NPDES MS4 Compliance program (prior 2014 Permit)
- Documents followed MSGP outline and requirements
- 34 City managed facilities now participating and covered by site specific SWPPPs

SPCC

- Facility inspections yielded 12 require SPCC coverage (excess of 1320 gallons of petroleum products stored on-site)
 - Fleet Maintenance
 - Transit Facilities
 - Golf Course
 - BioPark
 - Solid Waste Facilities

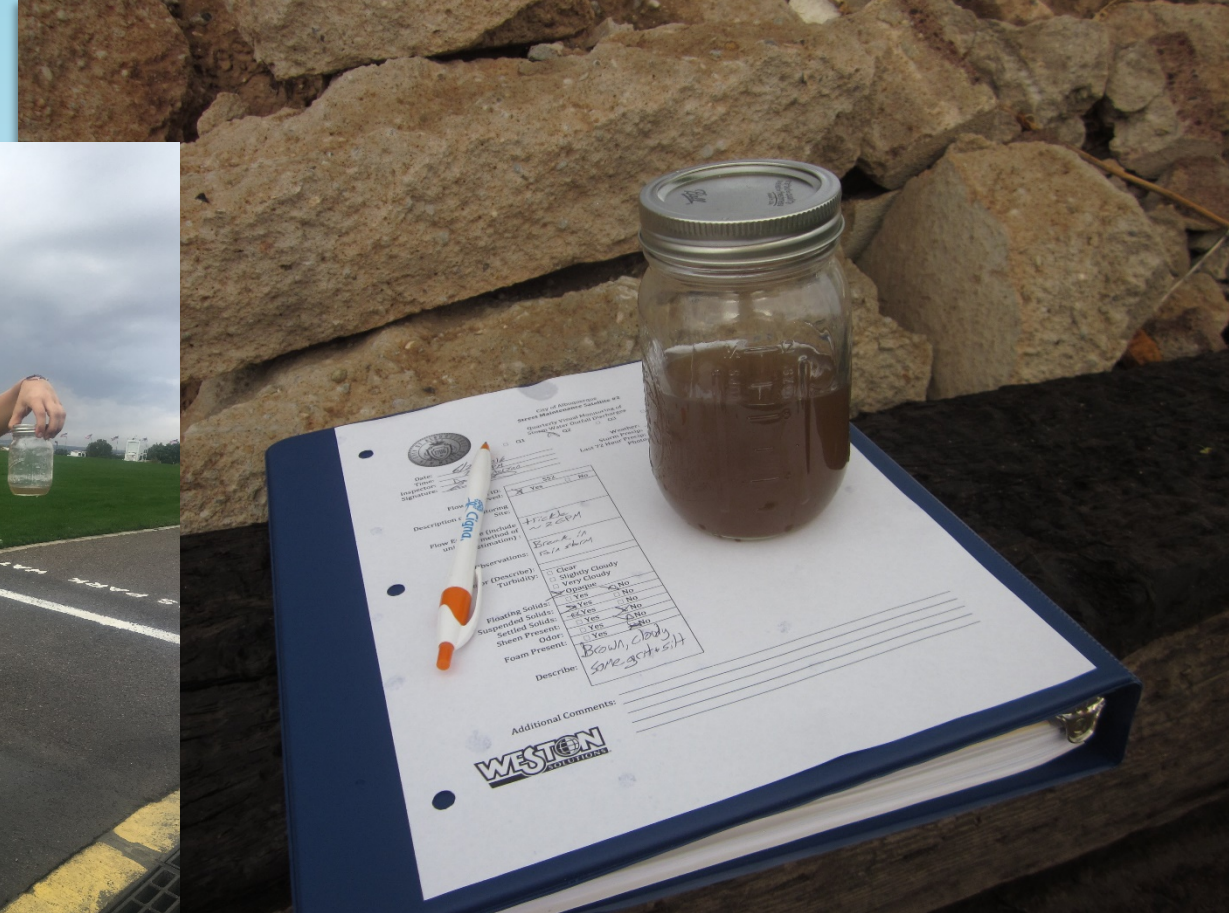
Visual Inspection of City Facilities

- Storm events require visual assessment and inspection
- Weston team mobilizes to evaluate potential impacted water discharges due to storm events
- Collect a qualitative sample and assess
- Complete inspection form/photo document for record purposes
- Provide quarterly summary report
- Follow-up if impacts identified

Visual Inspection Program



Visual Inspection Program – City Facilities



Industrial Facility Inspections

Element of:

Illicit Discharge Detection and Elimination Minimum Control Measure

- 48,000 registered Industrial Business in Albuquerque
- Initial Inspection Targeted SIC Codes Under High Risk definition
 - 1,952 specific locations
- Inspection Program underway –
Automotive Maintenance, Salvage Yards, Trucking, Material Storage, Bulk Oil Storage, Vehicle Storage, etc.
- City Managed Program – 4-person inspection team

BMP (Best Management Practices) Design and Implementation

Non-Structural BMPs



<http://www.cabq.gov/municipaldevelopment/our-department/engineering/storm-water-management/municipal-separate-storm-sewer-system-ms4-permit>

Non-Structural BMPs



Structural BMP Recommendations

Improvements to:

Waste Oil Storage

Hazardous Materials

Scrap Materials/Boneyards



Structural BMPs

