



2018

JOINT ENGINEER
TRAINING CONFERENCE
MAY 23-25 • KANSAS CITY, MO

2018

JOINT ENGINEER
TRAINING CONFERENCE
MAY 23-25 • KANSAS CITY, MO

Hurricane Irene
Deepwater Horizon Hurricane Katrina
Surf City New Jersey
Gold King Mine
Hurricane Maria/Irma
Joplin Tornado
Hurricane Matthew
Hurricane Sandy
No Cal Fires



Hosted by the Society of American Military Engineers



@SAMEFANPAGE |

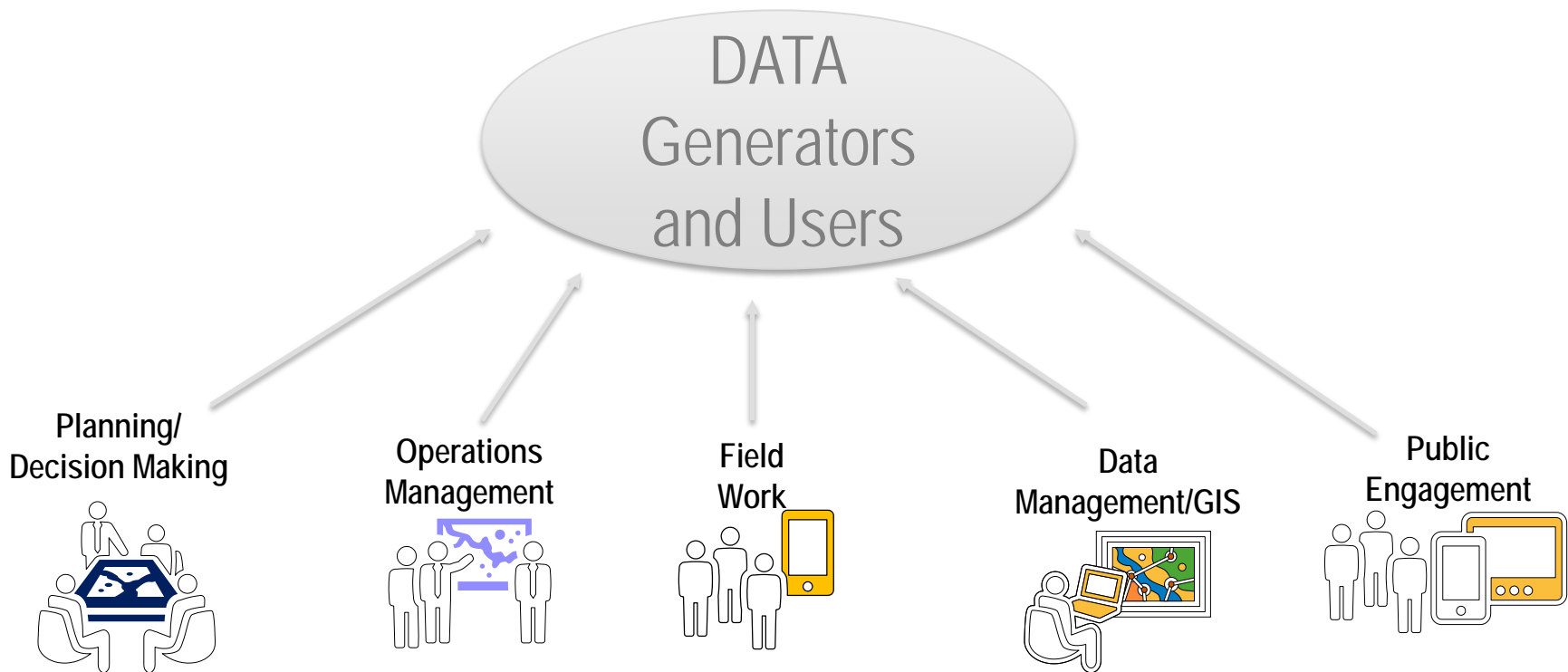


@SAME_HQ |

#SAMEJETC18

2018

JOINT ENGINEER
TRAINING CONFERENCE
MAY 23-25 • KANSAS CITY, MO



Hosted by the Society of American Military Engineers

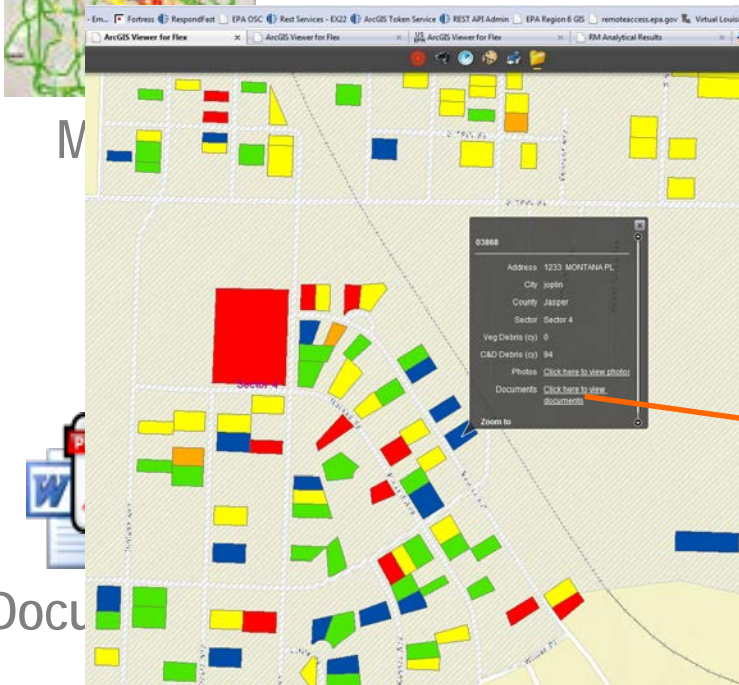


@SAMEFANPAGE |



@SAME_HQ | #SAMEJETC18

Photos



...eries/ViewPropertyDocs.aspx?propID=742B559C-6998-E011-8F53-001D08B7219E&IncidentID=FE1981C3-4AE1-4B80-A0...

Fortress RespondFast EPA OSC Rest Services - EX22 ArcGIS Token Service REST API Admin

Viewer for Flex Documents ArcGIS Viewer for Flex

Document Name: Initial Assessment.pdf
Date Uploaded: 7/29/2011 2:41:09 PM
Description:

Document Name: 03868 USACE ROE.pdf
Date Uploaded: 7/29/2011 2:41:01 PM
Description:

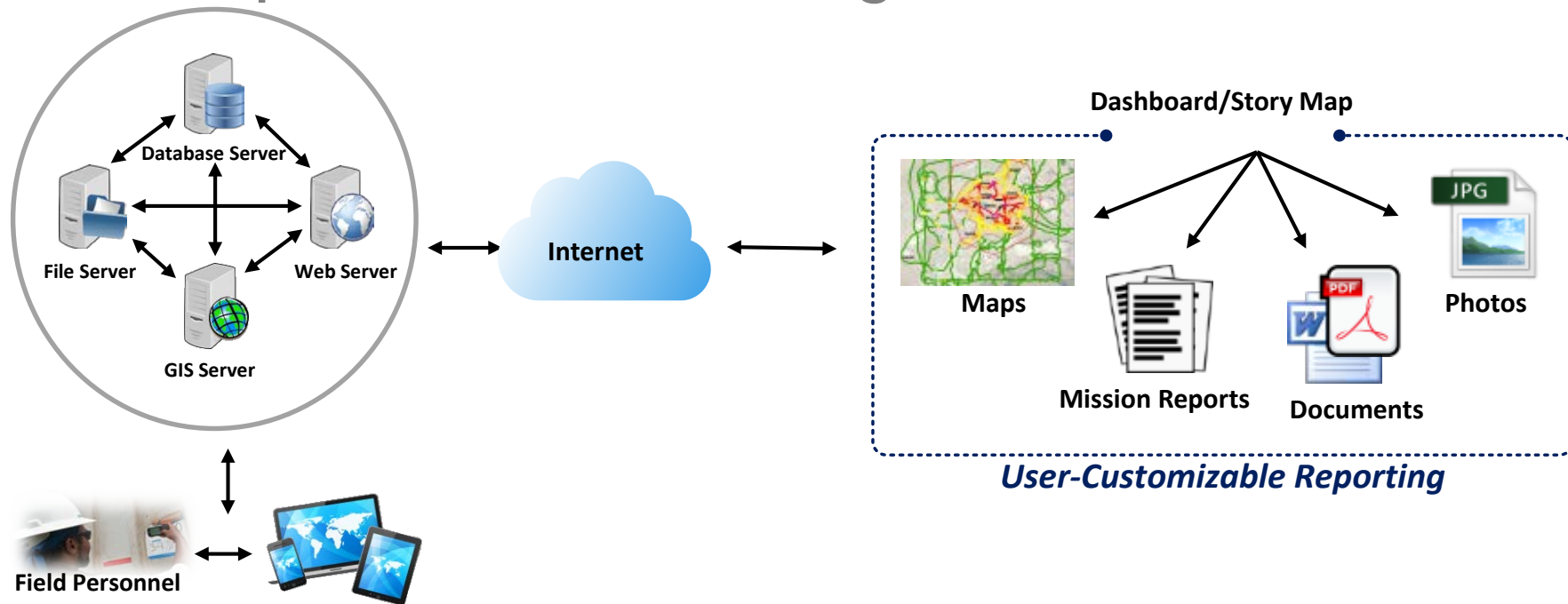
Document Name: 03868_ROE.pdf
Date Uploaded: 7/10/2011 7:57:26 PM
Description:

Document Name: 03868_IAC.pdf
Date Uploaded: 7/10/2011 7:57:26 PM
Description:

QGIS Viewer for Files		ArcGIS Viewer for Files		RM Analytical	
Imp No	Sample Date	Sample Time	Location	Property ID	
06322_07051	07/05/2011	09:55	SP5E123	SP5E123	
	Result	ResultUnits	ResultQualifier	Feed	
lane	74.1	ug/g/kg	U		
	74.1	ug/g/kg	U		39.2
lane	74.1	ug/g/kg	U		1360
r	74.1	ug/g/kg	U		1240
cothane	74.1	ug/g/kg	U		
	74.1	ug/g/kg	U		
	74.1	ug/g/kg	U		31
ne	74.1	ug/g/kg	U		
ne	74.1	ug/g/kg	U		
ne	207	ug/g/kg	U		
ne	74.1	ug/g/kg	U		
spogranie	207	ug/g/kg	U		
[206]	74.1	ug/g/kg	U		
	74.1	ug/g/kg	U		
	74.1	ug/g/kg	U		
e	2540	ug/g/kg	U		
ne	74.1	ug/g/kg	U		
	74.1	ug/g/kg	U		
e	493	ug/g/kg	U		
	207	ug/g/kg	U		
e	2540	ug/g/kg	U		
e	493	ug/g/kg	U		213
	493	ug/g/kg	U		117
	493	ug/g/kg	U		29
	2540	ug/g/kg	U		
	493	ug/g/kg	U		42.6
	493	ug/g/kg	U		
	741	ug/g/kg	U		
	493	ug/g/kg	U		
	493	ug/g/kg	U		31.2
	74.1	ug/g/kg	U		
e	493	ug/g/kg	U		

Analytical Data

Enterprise Data Management Architecture





2018

JOINT ENGINEER
TRAINING CONFERENCE
MAY 23-25 • KANSAS CITY, MO

DATA LIFECYCLE/JOURNEY

How to organize and manage large volumes of data efficiently and with purpose!



Hosted by the Society of American Military Engineers



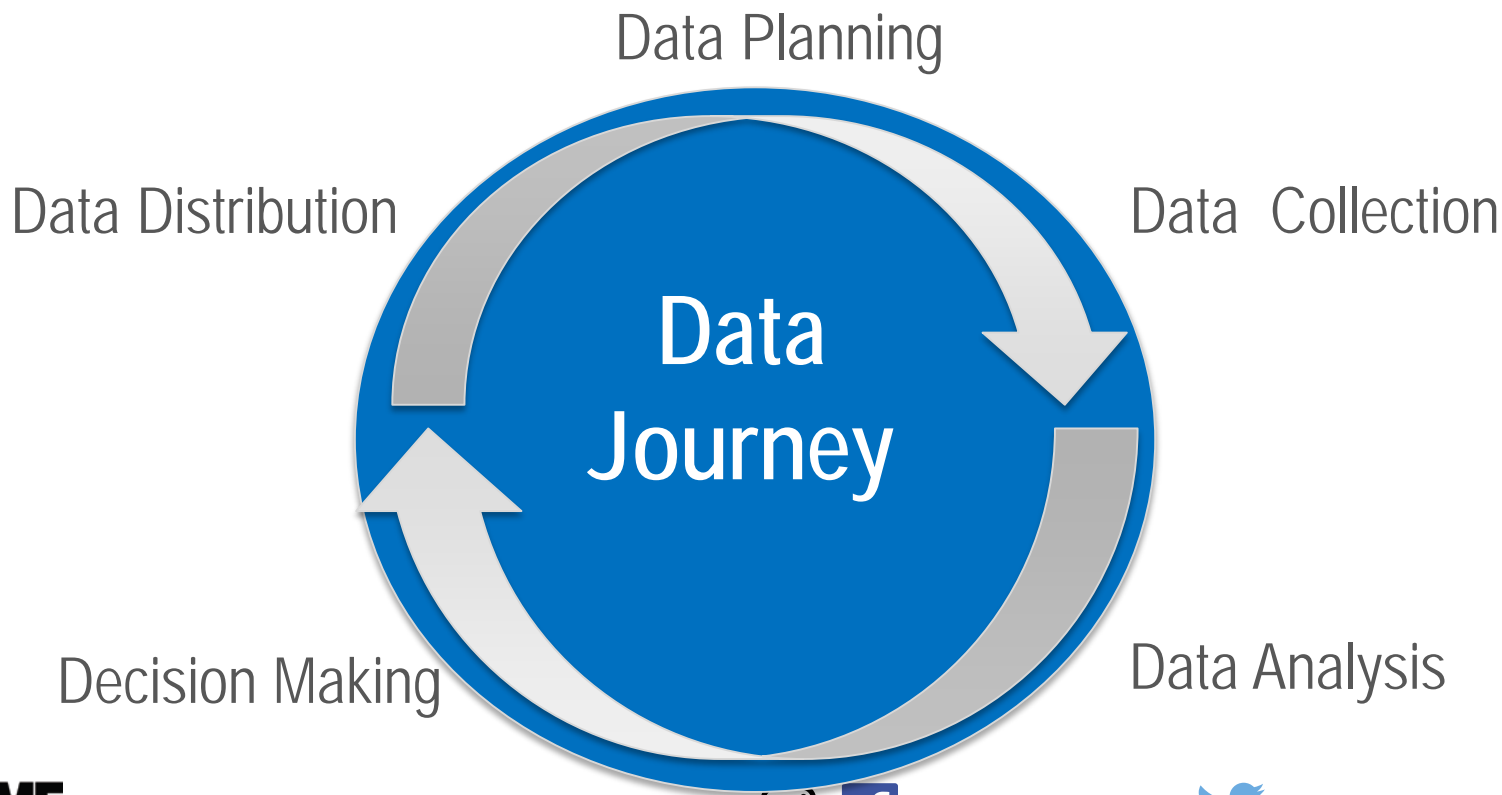
@SAMEFANPAGE |



@SAME_HQ | #SAMEJETC18

2018

JOINT ENGINEER
TRAINING CONFERENCE
MAY 23-25 • KANSAS CITY, MO



Hosted by the Society of American Military Engineers



@SAMEFANPAGE |

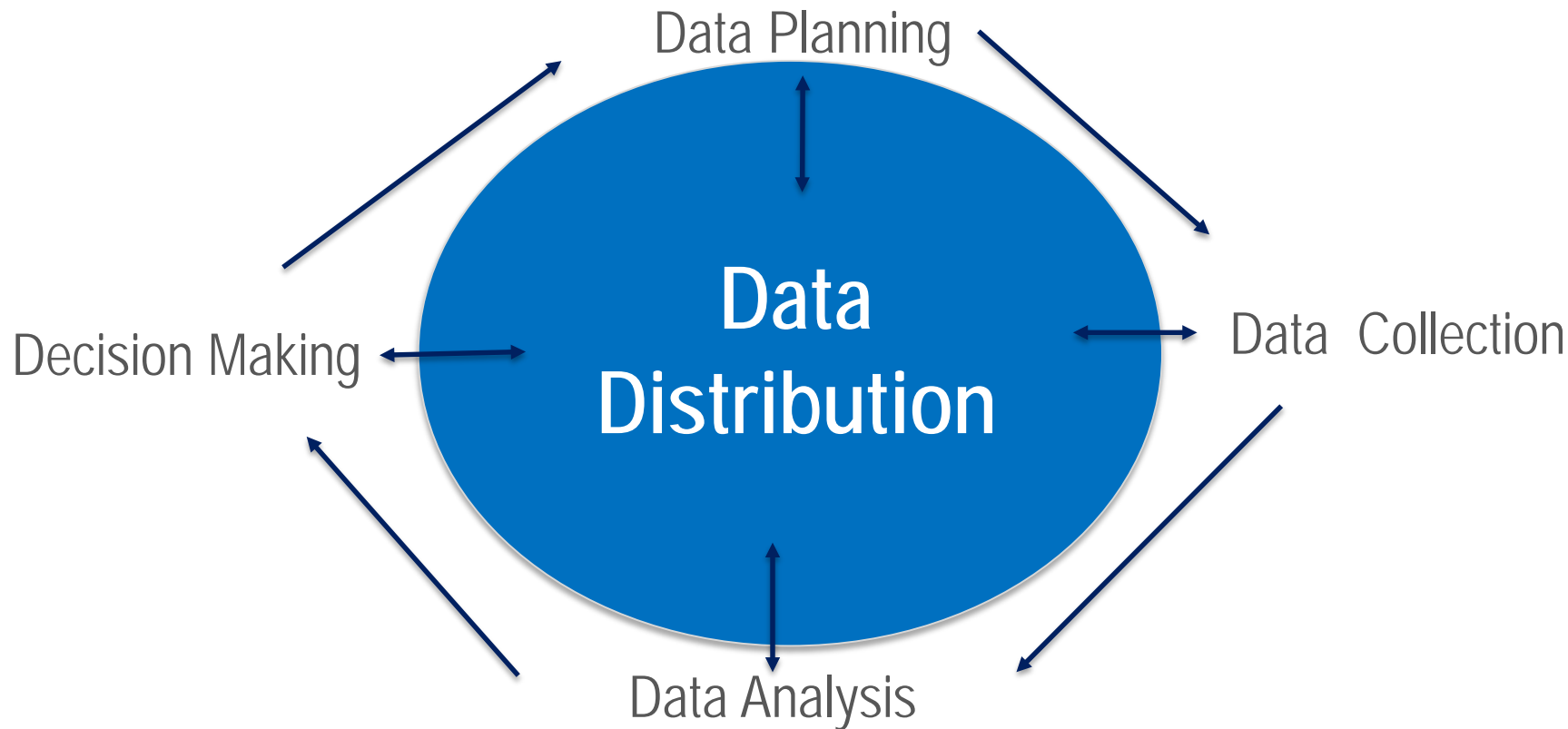


@SAME_HQ |

#SAMEJETC18

2018

JOINT ENGINEER
TRAINING CONFERENCE
MAY 23-25 • KANSAS CITY, MO



Hosted by the Society of American Military Engineers



@SAMEFANPAGE |



@SAME_HQ | #SAMEJETC18



2018

JOINT ENGINEER
TRAINING CONFERENCE
MAY 23-25 • KANSAS CITY, MO

DATA DISTRIBUTION

How do I make data available to multiple stakeholders?



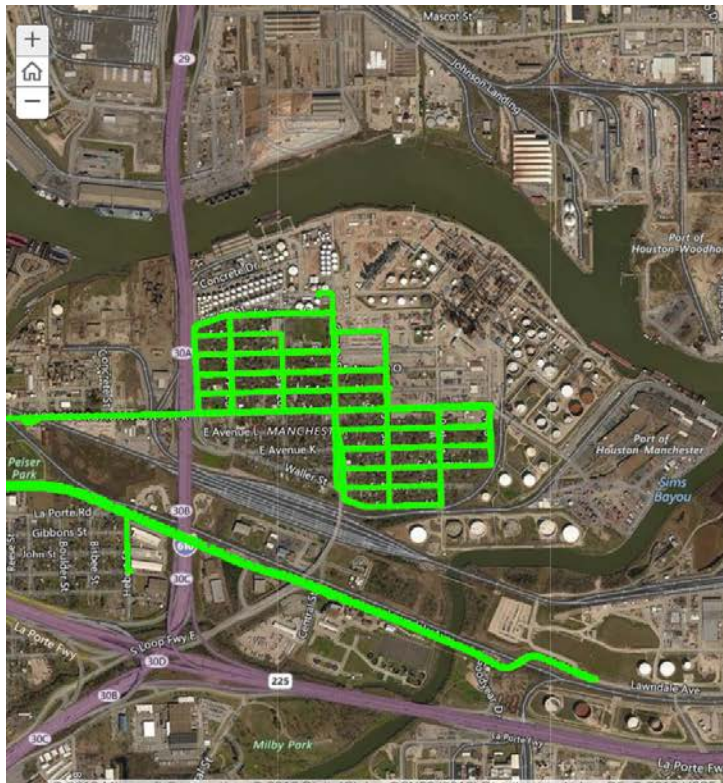
Hosted by the Society of American Military Engineers



@SAMEFANPAGE |



@SAME_HQ | #SAMEJETC18



WHAT DO WE KNOW ABOUT AIR QUALITY?

One of the many preparations for Hurricane Harvey included the EPA, the TCEQ, and other monitoring entities temporarily shutting down several air monitoring stations from the greater Houston, Corpus Christi, and Beaumont areas to protect valuable equipment from storm damage. Since then, state and local authorities have been working to get the systems up and running again as soon as possible. As of Monday, Sept. 11, the TCEQ's air monitoring network is operational 100 percent in Corpus Christi, 96 percent in Houston, and 86 percent in Beaumont. The network is expected to be fully operational again by the end of this week. Of the available air monitoring data collected from Aug. 24 through Sept. 10, all measured concentrations were well below levels of health concern.

The TAGA extensively monitored the neighborhood adjacent to the several refineries in southeast Houston. To date, no levels of targeted toxic chemicals were detected above the Texas TCEQ Air Monitoring Comparison Values (AMCV) short-term screening levels. TAGA results are available (Sept. 5, Sept. 6, Sept. 7, Sept. 10, Sept. 12, Sept. 13). EPA has concluded that the probable source of benzene and volatile organic compound readings in the Manchester community in Houston was the roof failure and spill from a light crude storage tank at the Valero Houston Refinery during Hurricane Harvey. EPA investigation into Valero Houston Refinery response and cleanup activities will continue.



2018

JOINT ENGINEER
TRAINING CONFERENCE
MAY 23-25 • KANSAS CITY, MO

DATA PLANNING

What is good data? The use of Data Management Plans



Hosted by the Society of American Military Engineers



@SAMEFANPAGE |



@SAME_HQ | #SAMEJETC18

Data Planning

Identify the required data streams. Note that non-standard data elements must be documented in Attachment A.

X		Data Stream	Sources	Standard Data Elements?	Data Repository
New	Existing				
		Site Log			
		Site Contacts			
		Site Files			
		Site Images			
		Field Observations			
		Field Mapping			
		Real-time Monitoring			
		Field Monitoring			
		Sampling Information			
		Laboratory Results			
		Validation Qualifiers			

Data Gathering

X	Data Repository	Data Collection		Data Processing	
		Lead Personnel	Standard Procedures?	Lead Personnel	Standard Procedures?
	Database name				

Data Analysis

Identify the core data products to be generated.

X	Data Product	Lead Personnel	Specifications (refer to RDMP)
	Data Usability Assessment		
	Web Map		
	Integrated Data Report		

Decision Making

Where will command decisions be documented?	
Will response.epa.gov be used to prepare the Administrative Record and Site File?	

Data Distribution

What media will be used release information to the public?	
--	--



2018

JOINT ENGINEER
TRAINING CONFERENCE
MAY 23-25 • KANSAS CITY, MO

DATA COLLECTION

How should the data be collected?



Hosted by the Society of American Military Engineers



@SAMEFANPAGE |



@SAME_HQ | #SAMEJETC18

NDOW
Location Orphan Containers Discharge/Release
+ - Delete

ORPHAN CONTAINER
HAZARD EVALUATION FIELD DATA SHEET
ESF-10 NDOW FORM
1 of 1

1. Incident Name
Tropical Storm Harvey - Tropical Storm Harvey - TX
2. Date (YYMMDD)
20170816
3. 24 HR Time (HHMM)
1316

Item ID (Location Name) - Example (EPA-HE1-B-100518-003)

16. Affiliation:
EPA
17. Group/Team Name/No. 18. Branch/Division:
HE1 A
19. Date (YYMMDD)
170816
20. Consecutive Item #
001

Location (Fill in all applicable information if known)

4. Physical Address or Cross Streets:
18250 Nassau Bay Drive

5. City:
Houston
6. State:
TX
7. Zip:
77058
8. County:
Harris

9. Latitude:
29.541133
10. Longitude:
-95.097105
Update Lat/Long

12. Waterway Affected:
N/A

13. Assessment/Evaluation Team Leader Name/Phone:
John Smith - 832-542-0395

14. Assessment Type:
Ground Assessment

15. Response Lead:
ESF-10

PhotoID: -1
Photographer: John Smith
Photo Taken on: 2/7/2018 1:20:30 PM
Photo No: 1
Direction: NW

PhotoID:
Photographer:
Photo Taken on:
Photo No:
Direction:

2018

JOINT ENGINEER
TRAINING CONFERENCE
MAY 23-25 • KANSAS CITY, MO

Survey123 Connect for ArcGIS

<Form PreviewSchema PreviewSettings

Drinking Water Sampling v2

▼ Assessment Information

Assessment Date *

Operational Area *
☐ STJ ☐ STT ☐ STX ☐ PR

Assessment By (EPA Representative): *

Assessor Phone *

▼ Facility Information

Facility Name *

Physical Address

PWS ID #

Load time on Windows 3.9 seconds

Validate Input



Hosted by the Society of American Military Engineers



@SAMEFANPAGE |



@SAME_HQ |

#SAMEJETC18



2018

JOINT ENGINEER
TRAINING CONFERENCE
MAY 23-25 • KANSAS CITY, MO

DATA ANALYSIS

What is Good Data?



Hosted by the Society of American Military Engineers



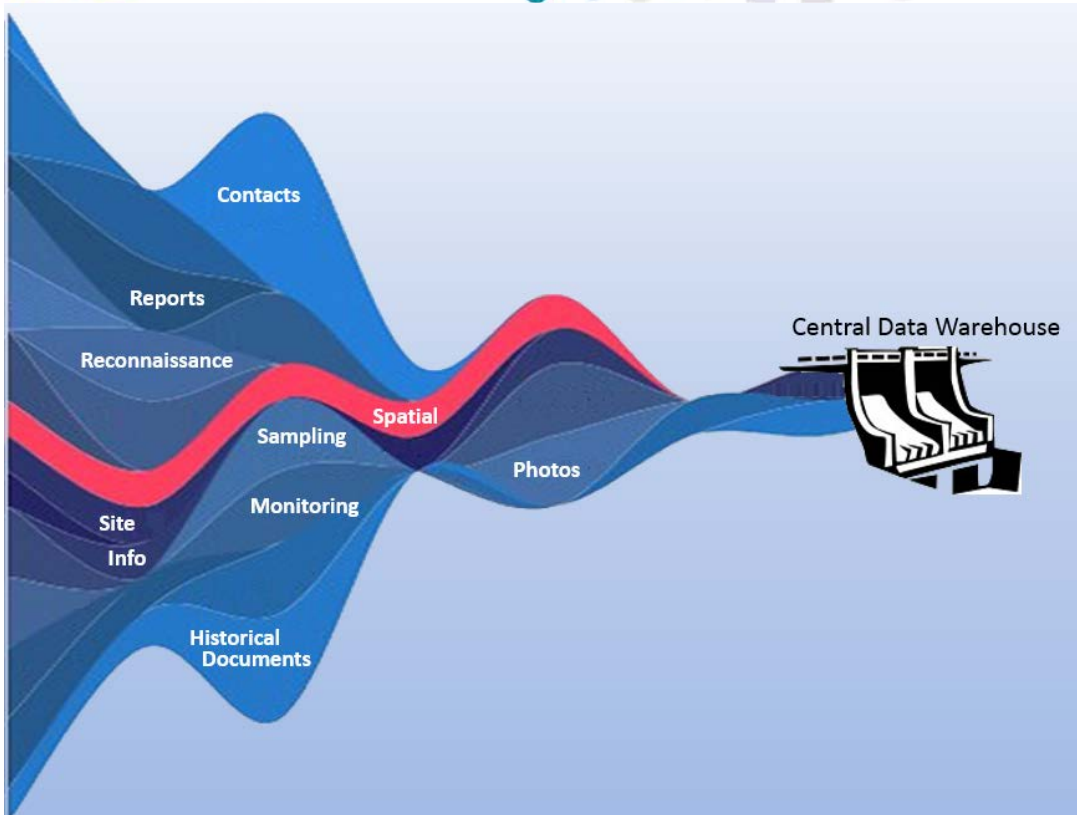
@SAMEFANPAGE |



@SAME_HQ | #SAMEJETC18

2018

JOINT ENGINEER
TRAINING CONFERENCE
MAY 23-25 • KANSAS CITY, MO



Organizing the Data Management Effort



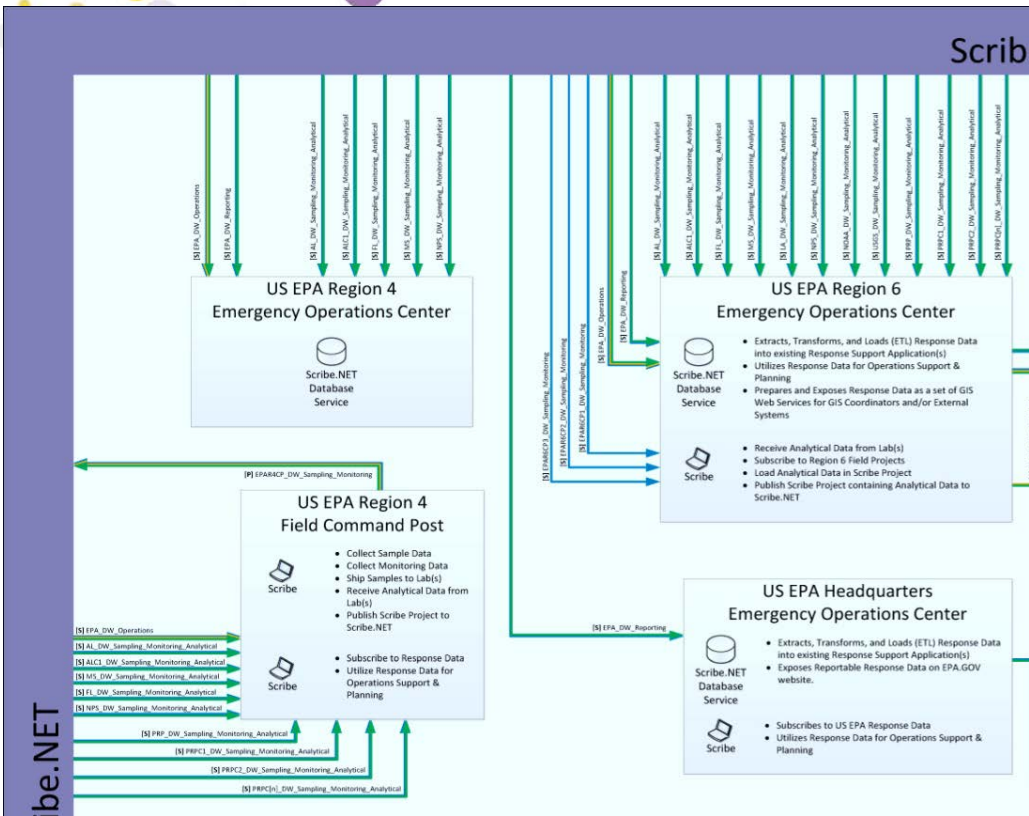
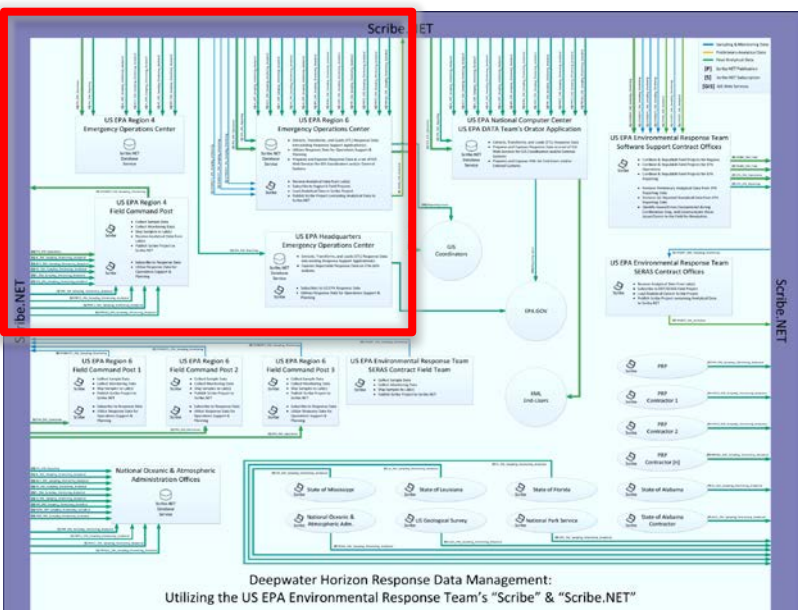
Hosted by the Society of American Military Engineers



@SAMEFANPAGE |



@SAME_HQ | #SAMEJETC18





2018

JOINT ENGINEER
TRAINING CONFERENCE
MAY 23-25 • KANSAS CITY, MO

VISUALIZATION

Data Becoming Actionable Intelligence for the Mission



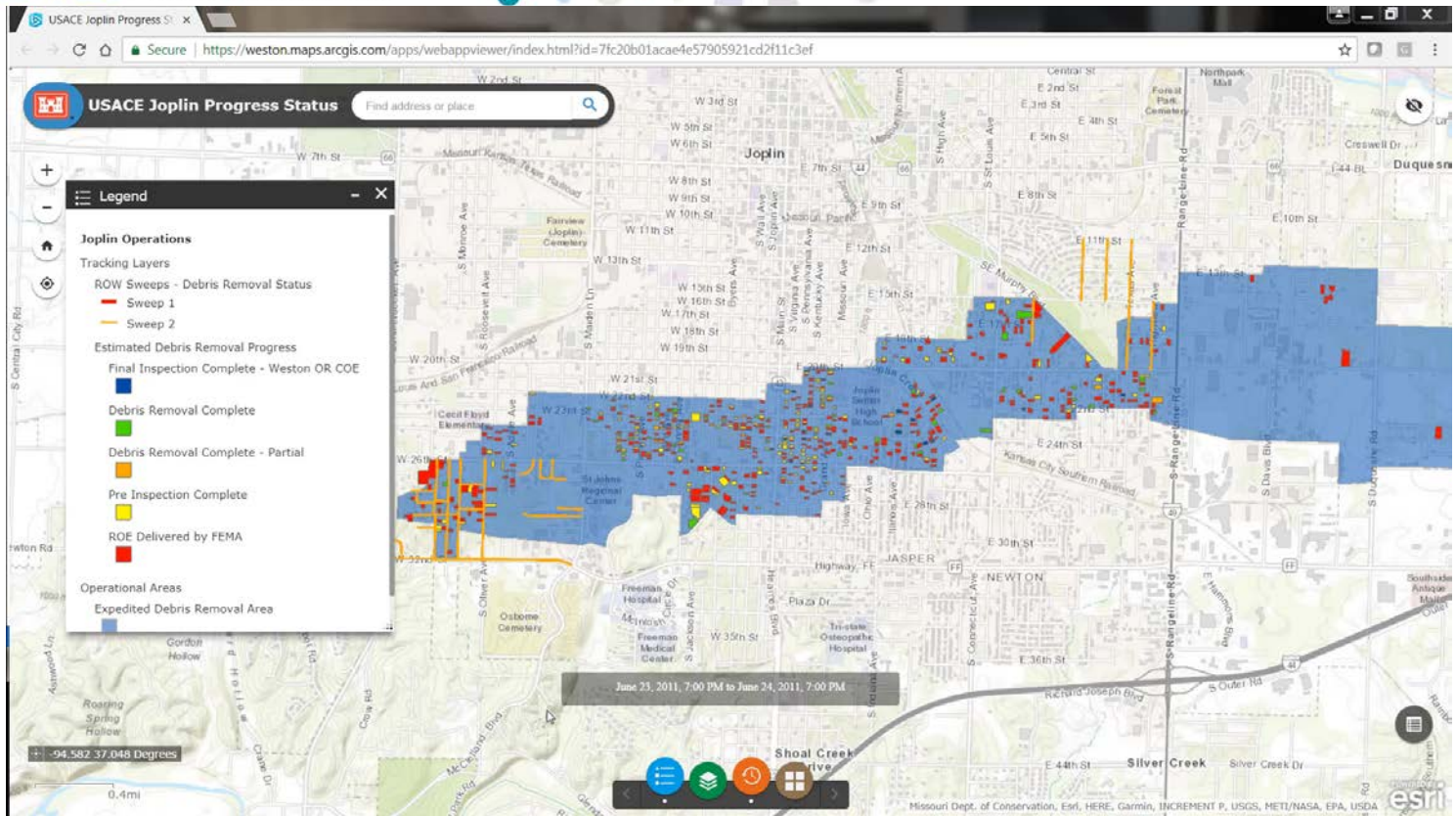
Hosted by the Society of American Military Engineers



@SAMEFANPAGE |



@SAME_HQ | #SAMEJETC18



2018

JOINT ENGINEER
TRAINING CONFERENCE
MAY 23-25 • KANSAS CITY, MO



Hosted by the Society of American Military Engineers



@SAMEFANPAGE |



@SAME_HQ |

#SAMEJETC18