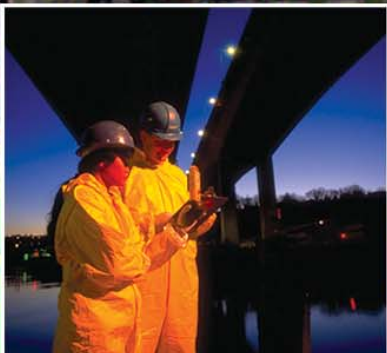


WESTON SOLUTIONS INDIA PVT. LTD.

A SUBSIDIARY OF WESTON SOLUTIONS, INC.

WESTON SOLUTIONS INDIA

Environmental Services
Engineering Design
Knowledge Management



an employee-owned company

>Weston Solutions India

Weston Solutions, Inc. (WESTON®) has been using teams and technology to deliver comprehensive solutions to complex environmental and redevelopment problems for industry and governments worldwide since 1957. With an emphasis on restoring resource efficiency—land, air, water, facilities, and staff—our strategic services include environmental consulting, engineering design, and knowledge management. WESTON has more than 1,800 diverse professionals strategically located at 60 United States offices and international operations in Asia and the Middle East.

Through its wholly owned subsidiary, Weston Solutions India Pvt. Ltd., established in 1998, WESTON provides clients with high-quality and innovative environmental, engineering design and knowledge management services using its global expertise and local talent pool.

Weston Solutions India is ISO 9001-2000 certified, strategically located in Hyderabad and is equipped with state-of-the-art infrastructure. Our India operations are staffed with local professionals knowledgeable in local regulations, language, and culture, and have firsthand understanding of the business challenges you face.

>Environmental Services

WESTON's leadership in the environmental services industry means expanded environmental engineering and design capabilities that help solve your toughest emerging challenges. We believe that the most successful solution to each complex problem is based on understanding the risks, good science, regulatory compliance, sound engineering principles, and cost-effective implementation of every project.

Our range of integrated environmental services includes:

- **Sustainability Services**
 - Sustainable Development
 - Sustainability Support Services
 - Facility Resource Efficiency
 - Clean Development Mechanism (CDM) Consulting
- **Air**
 - Ambient Air Monitoring and Sampling
 - Air Quality Management Services
 - Emissions Testing
 - Indoor Environmental Quality
- **Compliance Services**
 - Environmental Management Systems and Support
 - Regulatory Consulting Services
 - Health and Safety
 - Pollution Prevention
- **Remediation**
 - Site Assessment
 - Remedial Design and Treatment
- **Solid Waste**
 - Solid Waste Management
 - Landfill Engineering and Construction
- **Water/Wastewater Systems**
 - Wastewater Collection and Treatment Systems
 - Water Treatment, Distribution, and Supply Systems

>Engineering Design Services

Today's engineering world is facing pressure to lower costs, cut project turnaround times, improve efficiencies, and deliver reliable solutions with better quality designs. At WESTON, these challenges are well understood. Our engineering teams have expertise and knowledge gained by delivering solutions for complex projects related to facilities and infrastructure including vertical construction (buildings), horizontal construction (utilities and roads), municipal/industrial water/wastewater systems, environmental remediation, and impaired property redevelopment and renovation.

Our staff is well versed in engineering principles and international codes such as American Water Works Association (AWWA), American Concrete Institute (ACI), American Society for Testing and Materials, National Electric Code (NEC), British Standards Institution (BSI), and International Building Codes (IBC). Our engineers and designers are adept at utilizing leading industry software including AutoCAD, MicroStation, and STAAD Pro.



▼ *Cultivating the best talent from diverse disciplines, WESTON takes pride in implementing successful projects using strong quality processes, well-defined methodologies, and seamless global collaboration across project teams.*

Conceptual and Preliminary Design Services

- Design Concept Analysis and Evaluation
- Preliminary Design and Quantity Estimates
- Landscape Drawings and Specifications
- Architectural Drawings and Specifications
- Statutory Clearances and Permits
- Process Flow Diagrams
- Equipment Selection and Sizing

Detailed Design Services

- **Civil/Structural Engineering**
 - Site Layouts, Paving, Grading
 - RCC and Steel Structures Design and Drawings
 - Preparation of Bill of Quantities (BOQ)
 - Technical Specifications

- **Mechanical Engineering**

- General Arrangement (GA) Drawings
- Equipment Design and Drawings
- Fabrication and Shop Drawings
- Technical Specifications

- **Electrical Engineering**

- Single Line Diagrams and Layouts
- Equipment Design and Drawings
- Cable Sizing and Bill of Materials
- Technical Specifications

- **Other Engineering Disciplines**

- Plumbing Design and Drawings
- Process and Instrumentation (P&ID) Drawings
- Heating, Ventilation, Air-Conditioning and Cooling (HVAC) Drawings

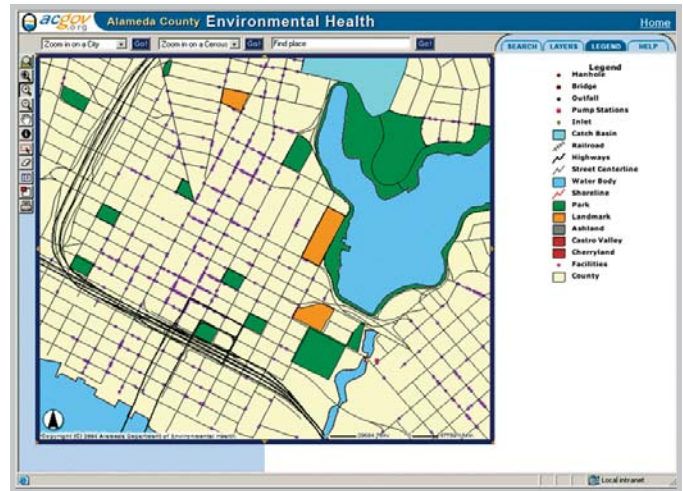
Construction Services

- Bid Proposal Assistance
- Value Engineering
- As-Built Drawings
- Operation and Maintenance Manuals

Knowledge Management Services

Knowledge Management at WESTON is a synergy of people, processes, and technology. We provide knowledge management services that enable our clients to cost-effectively collect, manage, and apply information resources. We integrate leading customized and off-the-shelf software to provide project data, identify problems, and properly manage and monitor resources and automated systems. The end result is minimized risk, lower costs, and higher performance levels.

WESTON's Knowledge Management Group has been developing Information Technology and Geospatial Technology applications for more than 15 years and maintains a highly qualified and diverse staff that includes experts from natural resource management, planning, environmental engineering, public works engineering, land surveying, geosciences, and mapping science fields. We have extensive experience delivering custom software applications that include data management systems, mobile data collection systems, Geographic Information Systems (GIS), Workflow Automation Systems, Facility Management Systems, Environmental Compliance Systems, and related services.



WESTON's ISO 9001:2000-certified application and data development operation uses a full suite of computer-aided software engineering (CASE) tools, version management software and repositories, regression and performance testing software, and our own Internet-based project issue tracking system.

Information Technology Services

- Application Development and Maintenance (Client/Server, Multi-Tier and Web Services)
- Software Testing Services (Functional, Load, Performance, Stress Testing)
- Building Data Warehouses (including extract, transform, and load tools)
- Data Migration/Conversion Services
- Web Enabling and Legacy Applications Conversion
- Web-Based Applications/Web Development

Geo-Spatial Technology Services

GIS Software Development Services

- Geodatabase Design and Maintenance
- Custom Application Development
- Image Processing, Remote sensing
- Mobile Data Collection Systems

GIS Data Management Services

- Data Conversion, Migration, Entry, Validation, Loading
- Parcel Mapping (COGO and Non-COGO); Street Centerlining
- Creation/Maintenance of maps
- Records/Document Management
- Environmental Data Management

Benefits of Weston India

Time and Cost Savings through use of cost-effective global talent and application of state-of-the-science technologies

Assured Quality by using strong process orientation and project lifecycle

Successful partnering and operating improvements through access to 50 years of experience in all aspects of environmental engineering, knowledge management consulting, and design

Improved environmental safety and reduced health and safety risks to workers and the surrounding community through assessment of existing conditions and applications of world class standards to site operations

► Proven Experience



► **WESTON oversees state-of-the-art incinerator technology to treat hazardous waste.** WESTON has provided technical guidance to the design, construction, and commissioning of a Hazardous Waste Incinerator for a Western India client. This incinerator receives chemical waste from one of the largest chemical industrial zones in Asia, with more than 1,000 industries manufacturing a wide variety of dyes, pesticides, pharmaceuticals, and other chemicals. The design and performance of this system meets United States and European standards.



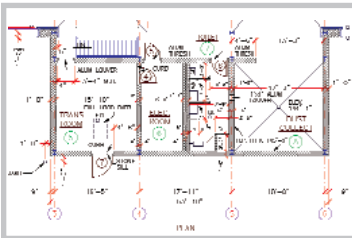
WESTON developed a plan to improve Calcutta's Water Supply and Sewer System. WESTON developed a plan of immediate action and provided technical operations assistance to upgrade the city's water utility. This project serves a population of over 12 million people and was funded by the World Bank. WESTON applied trenchless technology to develop pilot sewer pipeline rehabilitation program.

WESTON performed cost effective site assessments to a multinational client in India to evaluate potential risks and liabilities to the client. WESTON also provided recommendations to minimize potential risks.

WESTON provided a variety of engineering Computed Aided Design & Drafting (CADD) services. These projects include:

- Conversion of AutoCAD drawings to Microstation or GIS formats, and vice-versa
- Preparation of as-built drawings from red-lines and hard copies of the blue-prints
- Architectural, structural, mechanical, electrical, and plumbing plans, elevations, and sections
- Site plans, grading, landfill, underground utility drawings
- Process & Instrumentation Diagrams (P&ID)

All these projects were completed with significant cost savings, quick-turnaround and a high quality output.



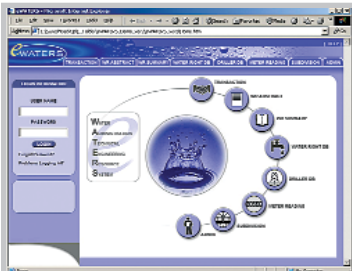
WESTON designed and implemented an enterprise wide Intranet Environmental Health and Safety (EHS) application that helps WESTON visualize, communicate, and realize its EHS goals. It maintains personnel profiles, current EHS status, training and medical records. It also facilitates course creation, scheduling, and management and tracks immunization certifications. It also provides multilevel security based on roles and organization hierarchy. The application called EHSTrack was developed using .NET technologies.



WESTON provided software re-engineering design and development of an enterprise-wide extranet application to process occupational health data between clients, clinics, laboratories, accounting, and a centralized processing center. The enterprise-wide Java/Oracle multi-tier Web based intranet/extranet application handles all major business processes from sales to invoicing. The system also automates the workflow of routine tasks thus improving efficiency and lowering operational costs. It provides online access to the clients and user-friendly display of Substance Abuse Testing, Drug Testing and Exam Scheduling data. The system was developed using object oriented methodologies, incorporated over 300 pages of business rules, 320 data tables, 2,000+ testing components, and 700 forms, and exceeds half a million lines of code.



WESTON developed the project requirements, class diagrams, logical and physical designs, conversion specifications, and the implementation plans for a statewide geodatabase for all water rights for a state agency in the United States. WESTON converted over 20,000 water right parcels linked to real property. The water right parcels (*called Places of Use*) were converted by ge-registering the source surveys to digital orthophotography, digitizing the parcels and related features, populating the GIS features, and linking selected features to an enterprise water rights database. All key spatial features have accuracy attributes as defined by the National Standard for Spatial Data Accuracy. The GIS developed by WESTON has been recognized as a model for all future GIS developments in the state.



For More Information, Contact:

Weston Solutions India Pvt. Ltd.

524 Road No. 27, Jubilee Hills, Hyderabad, AP 500 033 INDIA

Phone: +91(40) 2354-2041 • Fax: +91(40) 2354-1394

E-Mail: IndiaInfo@westonsolutions.com

► **Click To WESTON On The Web**

www.westonsolutions.com

an employee-owned company



B-D077 1.07