

WESTON SOLUTIONS, INC.

# DELIVERING ENVIRONMENTAL INFORMATION TECHNOLOGY SOLUTIONS

Environmental Data Management Services  
Mobile Data Collection Systems  
Geographic Information Systems  
Web-Based Applications  
Web Development  
Workflow Automation Systems  
Document Management Systems  
Facility Management Systems



*an employee-owned company*

## > Solving Your Toughest Challenges

As a leading environmental, redevelopment, and renovation firm, Weston Solutions, Inc. (WESTON®) assembles focused teams and appropriate technologies to deliver innovative solutions to tough environmental challenges. WESTON develops custom software applications that include data management systems; mobile data collection systems; Geographic Information Systems (GIS) database query interfaces and mapping tools; proprietary data management systems; Workflow Automation Systems; Facility Management Systems; and PC-based auditing tools.

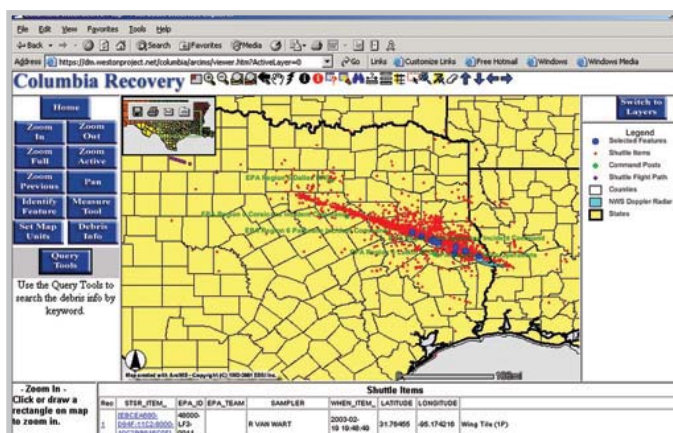
WESTON's Information Technology (IT) Group has been developing applications for more than 15 years and maintains a staff of programmers, database administrators, data managers, and GIS analysts throughout the United States and internationally.

### ENVIRONMENTAL DATA MANAGEMENT SERVICES

WESTON's Environmental Data Management Services provide a proven data management process to reduce costs and maximize efficiency. WESTON offers a host of customizable applications to automate collecting, moving, exchanging, analyzing, obtaining, and reporting project information.

#### Benefits:

- Reducing costs through more efficient data retrieval, storage, and evaluation
- Standardizing Electronic Data Deliverable (EDD) submissions that minimize editing and save manhours
- Providing real-time data loading and accessibility during field operations
- Easing data selection with a simple form-based query tool
- Supporting multisite projects
- Enabling the merging of historical data
- Producing standardized reports in minutes
- Exporting deliverables that meet client file structures, content, and format



**As lead environmental contractor for the Space Shuttle Columbia recovery, WESTON developed and maintained a database to geospatially reference more than 100,000 pieces of potentially hazardous debris**

### MOBILE DATA COLLECTION SYSTEMS

Mobile data collection systems are hand-held computer programs, utilized on a Tablet PC or Portable Digital Assistant (PDA), designed to replace traditional data collection methods.

#### Advantages of a mobile solution:

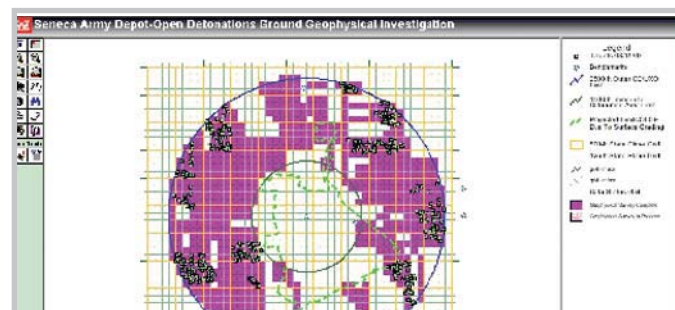
- Decreased manhour costs by over 50%
- Elimination of transcription errors by field/production personnel, increasing data accuracy
- Elimination of data rekeying by office staff, increasing accuracy and decreasing cost
- Easy data access and verification while in the field
- Barcode technology that reduces data errors
- Preloaded schemes that simplify sampling efforts
- Enhanced sample tracking

### GEOGRAPHIC INFORMATION SYSTEMS

WESTON has extensive experience producing GIS applications and services that provide valuable solutions to complex, data-driven problems. As an ESRI-certified business partner, WESTON is experienced with all major GIS applications.

#### Valuable techniques:

- Customizing solutions using leading GIS software
- Deploying Web or graphical user interface (GUI) solutions
- Providing GIS analysis and data manipulation
- Providing application training and support



**WESTON harnesses GIS applications to make data management and interpretation easier for field technicians and decisionmakers**

### WEB-BASED APPLICATIONS

Web-based applications provide the power of desktop and server applications with the flexibility and accessibility of the Web. Using Web browsers, users can securely access applications from anywhere within the reach of the company intranet or extranet.

#### Benefits of Web-based applications:

- Existing applications can work as both a desktop and Web solution
- Employees have data access from anywhere, 24/7
- Applications can be maintained remotely, reducing overhead costs for system upkeep
- A Web-based application can host parts of an application in different locations; multiple machines can host multiple instances of the application to prevent server overload
- Application security can be centrally managed

## WEB DEVELOPMENT

WESTON's IT group also develops professional, informational Web sites for clients.

### Advantages of WESTON's Web development capability:

- Web sites are designed by trained programmers experienced in the environmental arena
- Web pages are easily updated
- WESTON subject matter experts and technical editors provide technical input as necessary
- WESTON hosts client Web sites



**WESTON develops project-specific Web sites that put technical information at your fingertips**

## WORKFLOW AUTOMATION SYSTEMS

Workflow Automation Systems (WAS) are developed to streamline routine tasks and support people working remotely. WAS services include calendar sharing, collective writing, e-mail, shared database access, and electronic meeting participation. WESTON uses a combination of internally developed tools and WebEx to empower work groups, streamline business, improve decisionmaking, and save costs.

## DOCUMENT MANAGEMENT SYSTEMS

Document Management at WESTON means collection, management, and delivery of digital documentation as well as transfer of legacy, hard-copy documents (such as maps, photos, video, analytical results, field tests, depositions, notes, drafts, regulatory) into an easy-to-access electronic format. WESTON's customized solutions:

- Facilitate information storage, access, and transfer
- Provide clients with a unique, industry-specific GUI
- Afford a simple, effective document search method
- Reduce expenses for hard copy storage and access

## FACILITY MANAGEMENT SYSTEMS

WESTON integrates Facility Management Systems (FMS) with enterprise information systems for efficient management of physical facilities such as pipes, meters, signs, streets, valves, and pumps. A typical FMS tracks service requests, work orders, crew performance, infrastructure history and condition, and life-cycle costs. WESTON helps select the best commercial off-the-shelf (COTS) facilities management packages or develops client-owned FMS applications, and helps integrate legacy systems, GIS, and general WAS.

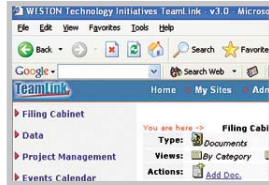
## WESTON's Tools, Technology, and Process Experience

<b>Proprietary Products</b>	TeamLink <sup>SM</sup> Web-Based Collaborative Workspace, AuditFast <sup>®</sup> Compliance System, RespondFast <sup>SM</sup> , Information Technologies
<b>Technologies</b>	AS/400, Client/Server, Web (intranet, eExtranet, Internet), ActiveX, COM/OLE, and Distributed Objects (COM, CORBA), EJB, E-Commerce, E-Business, IVR (Interactive Voice Response), GIS, Group Collaboration, Remote Telemetry, Field Data Collection
<b>Operating Systems</b>	Windows 98, Windows NT, Windows 2000, Unix, Solaris, Linux, OS/400, Domino 6.0
<b>Languages/Tools</b>	C++, C, RPG/400, ILE RPG, CL/400, SQL/400, QUERY/400, SDA, DFU, SEU, RLU, SQL, PL/SQL, Java 2EE, MapBasic, Fortran 77, Visual Basic, Microsoft C#, Lotus Notes LotusScript
<b>GUI</b>	Visual C++ with MFC, .NET, Visual Basic, Vision JADE, Visual Age, Delphi, JBuilder, Lotus Notes
<b>Testing Software</b>	MS Test 2.0 and SQA Team Test
<b>Configuration Management</b>	Web-based PVCSM and MS Visual SourceSafe
<b>Issue Tracking</b>	PVCS Tracker
<b>RDBMS</b>	Oracle, SQL Server, Informix, Sybase, Access, and DB2/400
<b>GIS/CAD</b>	NISA Finite Element Analysis, Imagineer Technical, MicroStation, MGE MATLAB and Mathematica, Geomedia, with ARC/INFO, ArcView, and AutoCAD Geomedia Pro, Geomedia Network, and InRoads Survey, ERDAS Imagine, ER Mapper, MapInfo, ASP Map, ISRO Vision, and Small World
<b>Web Technologies</b>	ASP, HTML, Lotus Domino, VB Script, Java Script, Sun JDK, Cold Fusion, Java, CORBA, Java Servlets, Java Swing, Java Beans, Weblogic, Websphere
<b>OO Methodology</b>	Rational's Unified Process and Unified Modeling Language (UML)

## ► Proven Experience

For more than 15 years, WESTON has been developing sites-specific technology, providing high-quality work and significant time and cost savings:

- For the U.S. Army, WESTON developed an Environmental Program Requirements (EPR) Process Web site to help review environmental projects.
- As lead environmental contractor for the largest emergency response ever conducted by EPA, the Space Shuttle Columbia recovery, WESTON developed a PDA-based application to log recovered items, and provided data in real-time via the Web.
- For construction on a former landfill site, WESTON automated six air-monitoring stations for real-time Web-based data monitoring, reporting, and alarm notification, and the materials and truck manifesting system for excavation of 700,000 tons of contaminated soil.
- For a gas transmission corporation, WESTON investigated over 11,000 sites and collected, managed, and delivered data electronically.
- For a petroleum company, WESTON created a PDA-based data collection system for EMIS.
- For an automobile manufacturer, WESTON built a Lotus Notes-based purchasing system for Value Analysis Automation and an environmental document retention system.
- For consumer products manufacturers, WESTON developed a Web-based global regulatory requirements tracking system and Web-based auditing systems.
- For Alameda County, California, WESTON built an Intranet GIS with document management capabilities to leverage its geographic and document image data sets.



## ► For More Information, Contact:

Your local WESTON office: <http://www.westonsolutions.com/about/locationstext.htm>

E-mail: [info@westonsolutions.com](mailto:info@westonsolutions.com)

1-800-7WESTON