



The Trusted Integrator for Sustainable Solutions

SERVING THE DEPARTMENT OF ENERGY FOR 20 YEARS

Nuclear and Waste Management Operations

Nuclear Facility Management

Environmental and High-Hazard Remediation

Design/Build Construction

Renewable Energy Solutions



an employee-owned company

> Integrated Solutions to Meet DOE's Toughest Challenges

Weston Solutions, Inc. (WESTON®) has a long, successful history with DOE that began on projects such as UMTRA and the Civilian High-Level Radioactive Waste Program. The DOE-WESTON relationship has continued with projects that exemplify WESTON's strong partnership with DOE and our commitment to continuing that partnership in traditional service areas, as well as meeting the evolving needs for DOE, such as in the field of renewable energy.

WESTON's most valuable asset is our people. We bring to DOE 1,800 professionals located throughout the U.S. (and the world) in locations near the DOE's most critical locations. Our access to top-level professionals worldwide ensures we can build the team with the right expertise to best respond to client needs quickly and effectively.

WESTON is...

- A \$500 million business with more than 50 years of sustainable operations and a world-class safety record
- A global leader in environmental, sustainable and energy solutions, property redevelopment, and design/build construction
- A company investing in the design, build, financing, and operations of new renewable energy sources

WESTON has...

- More than 20 years of experience at 10 DOE/NNSA facilities specializing in waste management and facility operations and environmental, nuclear, and high-hazard remediation
- Financing and asset management expertise for the development of impaired property and new renewable energy production sources

WESTON brings...

- A strong safety record (0.43 EMR for 2009)
- Exceptional Waste Management and High-Hazard Remediation experience and expertise
- Ongoing facility operations experience
- Robotics/remote operation capabilities
- Rapid deployment capabilities
- Outstanding performance ratings

WESTON's 20-Year History of Successfully Serving DOE

SITE	PARTIAL LIST OF SERVICES PERFORMED
Los Alamos National Laboratory	Waste packaging, transportation, waste acceptance, environmental restoration, characterization, reporting
Sandia National Laboratories	Waste characterization, waste sorting segregation, packaging, transportation, environment restoration, facility management
Y-12 and ETPP	Waste characterization, facility and operations management
Mound	Waste characterization, packaging, transportation, facility management
Rocky Flats	Waste certification, characterization, program management, facility management
Idaho	Quality assurance acceptable knowledge, waste characterization, facility management
Waste Isolation Pilot Plant	Waste acceptance, disposal, facility management
Paducah	Hazardous and radiological waste management operations



> WESTON's Experience and Capabilities

- **Nuclear and Waste Management Operations**
 - Low-level/low-level mixed waste
 - Transuranic waste
 - Hazardous waste
- **Nuclear Facility Management**
 - Full life-cycle waste management
 - Operational readiness reviews
 - Remote waste handling
 - Safety and risk reduction
- **Environmental/High-Hazard Remediation and Program Support**
 - High-hazard, remote-handled waste
 - Turnkey construction management
 - Liability transfer and risk reduction insurance
 - Site investigation and remediation design
 - Data modeling, analysis, and interpretation
 - Reporting
- **Design/Build Construction**
 - Construction and renovation
 - Demolition and decommissioning
 - Security and facility hardening
 - LEED® and green buildings
- **Renewable Energy Solutions**
 - Feasibility studies and technology assessments
 - Turnkey project implementation
 - Financing and development

► Representative Projects



▼ Nuclear & Waste Management Operations: Sandia Radiological and Mixed-Waste Management Facility (RMWMF)

For more than 11 years, WESTON has and continues to successfully operate the Radioactive Mixed Waste Management Facility and the Manzano Bunker Complex, which consists of six non-reactor Hazard Category 3 nuclear facilities and a radiological facility and includes low-level radioactive waste and low-level mixed waste storage facilities, laboratory buildings, and interim storage. WESTON's staff characterizes, packages, profiles, stores, transports, disposes, and provides data management of mixed and radioactive waste streams, including transuranic (TRU) waste, generated in ongoing operations and from legacy waste streams. WESTON's ongoing success is demonstrated in the following milestones:

- Completed more than 200 sort campaigns allowing for shipment of greater than 1,000 cubic meters of waste, including legacy, post-legacy, and classified items
- Developed and implemented innovative treatment technologies for problematic mixed waste streams, including the pulverization, deactivation, and stabilization of mock high explosives; macroencapsulation of classified D-test debris, boom boxes, neutron tubes, and neutron generator sub-assemblies; and stabilization of tritiated California oils
- Established expertise in repackaging and shipping nuclear material, addressing Molten Pool, Mo-99 Targets, Melt Progression 1 and 2, Highly Enriched Uranium, and Unclassified Depleted Uranium
- Zero lost-time injuries in more than 11 years of extensive field work
- Developed and implemented RCRA programs, including a Training Program, Inspection Schedule, and Contingency Plan with no violations from 11 annual New Mexico Environment Department RCRA audits.



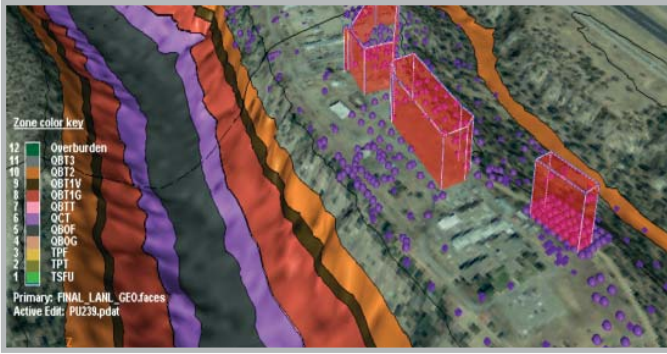
▼ Nuclear & Waste Management Operations: Oak Ridge Reservation (ORR)

WESTON, through our majority ownership in WESKEM, LLC, managed radioactive, contact-handled TRU (CH-TRU), remote-handled (RH-TRU), TRU mixed, and PCB waste operations at ORR, including Oak Ridge National Laboratory, Y-12 National Security Complex, and the East Tennessee Technology Park. Services included waste characterization, packaging, profiling, storage, and transportation and disposal, including operating five CH-TRU and two RH-TRU waste storage facilities, and more than 100,000 containers of legacy mixed waste. This included preparing containers for delivery to the Waste Processing Facility (venting, purging, and sampling). WESTON evaluated waste generators' characterization methods, maintained inventory control, conducted nuclear criticality safety evaluations, and ensured compliance with Nuclear Material Control and Accountability procedures to meet Special Nuclear Material Reporting requirements.



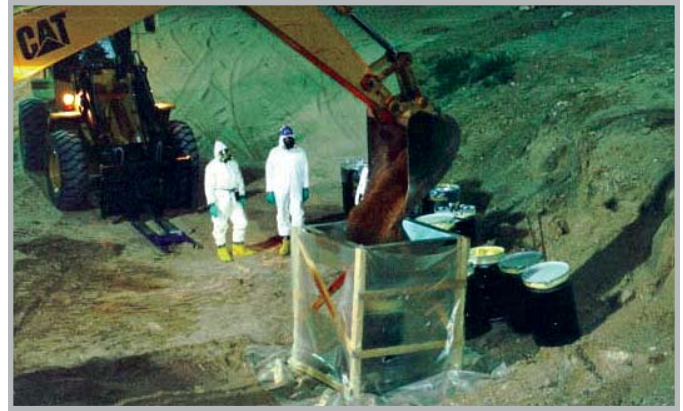
▼ Waste Management: DOE Mound Plant

As part of the management team, WESTON directed hazardous, low-level radioactive waste (LLW), and solid waste management during closure-related activities at the Mound site. Waste management activities included generation planning, handling, characterizing, certifying, tracking and data management, packaging, on- and off-site transporting, and arranging off-site disposal for low-level, mixed, TRU, solid, and hazardous waste, as well as excess nuclear materials. Waste was disposed of off-site. During the project, WESTON successfully disposed of the site's entire inventory of 2.5 million gallons legacy radioactive waste, 8,000 gallons of legacy mixed waste, and 7.5 million gallons of newly generated radioactive waste.



**Environmental Programs Support:
Los Alamos National Laboratory (LANL)**

Since 2004, WESTON has been providing a wide range of environmental support at LANL, including Phase IIs, work plans, and reports on sampling and monitoring work. Of special note is the data integration and analysis, for which WESTON utilizes 3D geospatial data visualization models developed using earthVision® software. These models facilitate communication with stakeholders—including local and state regulators and the public—by depicting complex site conditions and visually presenting planned future investigations in a 3D color figure that aids in the final site interpretation.



**Environmental Restoration Project Support:
Sandia National Laboratories (SNL)**

For 16 years, WESTON has supported the SNL Environmental Restoration Project, conducting landfill remediation, groundwater investigations, health physics oversight, human health risk assessments, waste management, sampling, GPS mapping, computer modeling, and database management. WESTON's support includes high-hazard remediation and clean closure of several radioactive material landfills, involving excavating landfill contents using remote systems; conducting on-site analyses for hazardous chemical and radioactive constituents; segregating and staging waste material and debris; implementing all programmatic aspects; removing landfill caps; and removing and packaging soils contaminated with plutonium.

>Sample Renewable Energy Project



WESTON financed and installed a 185-kW rooftop solar array to provide a source of clean, stable energy for the City of Newark. Through a Power Purchase Agreement, the system was provided at no capital cost to the city and at energy rates less than the current utility-provided power. In addition to reducing greenhouse gas emissions and the city's carbon footprint, the energy from the 806 photovoltaic panels provides a reliable source of energy independent from the grid. *This solar project financing model can be applied to federal facilities.*



**Remediation:
Tonopah Test Range (TTR)**

WESTON is locating, identifying, and destroying or rendering inert suspect unexploded ordnance (UXO) items at TTR. The project includes several areas where bomblet drops were conducted from the late 1960s to 1985 of submunition and cluster bombs. The submunitions range in size from 2 to 4 inches and while they were mainly inert, there were several live tests using high explosives. WESTON will explosively vent to either detonate or confirm inert all MEC and stage material for final disposition and will perform geophysical surveys to ensure no other MEC are present.

For More Information, Contact:

Your local WESTON office: <http://www.westonsolutions.com/about/locations.htm>

E-mail: info@westonsolutions.com

1-800-7WESTON